

Б.Бас Б.К-бас

(итальянская народная песенка)

ТИРИТОМБА

обр.Сергея Моисеева

6

The bass line of 'The Rose Tree' is written on a single staff in bass clef with a key signature of three flats (B-flat, E-flat, A-flat). The melody consists of the following notes: G2 (quarter), A2 (quarter), B-flat2 (quarter), A2 (quarter), G2 (quarter), F2 (quarter), E-flat2 (quarter), D2 (quarter), C2 (half). The final measure contains a whole rest.

10

14

The bass line of 'The Rose Tree' is written on a single staff in bass clef, with a key signature of three flats (B-flat, E-flat, A-flat). The melody consists of four measures. The first three measures each begin with a quarter rest, followed by a quarter note, a half note, and a quarter note. The notes in these measures are G2, F2, E2; G2, F2, E2; and G2, F2, E2, respectively. The fourth measure contains a beamed eighth-note pair (G2, F2), followed by a quarter note (E2), a quarter rest, and a final quarter rest.

18

Musical notation for the bass line of "The Rose Tree" in G minor, 3/4 time. The melody consists of eighth and quarter notes with rests.

23

The musical notation for the bass staff shows the following notes and rests across five measures:

- Measure 1: G₂, A₂, B₂
- Measure 2: C₃, D₃, E₃
- Measure 3: F₃, G₃, A₃
- Measure 4: B₃, C₄, D₄
- Measure 5: E₄, F₄, G₄

27

The bass line of 'The Rose Tree' is written on a single staff in bass clef, with a key signature of three flats (B-flat, E-flat, A-flat). The melody consists of the following notes and rests: G2 (quarter), A2 (quarter), B-flat2 (quarter), A2 (quarter), G2 (quarter), F2 (quarter), E-flat2 (quarter), D2 (quarter), C2 (half). The notes are written in a simple, folk-like style with stems and beams.

31

[illegible]

34

аранжировка С.Моисеева

V.S.

38



43



47



51



54



58



63



67



71



75



79



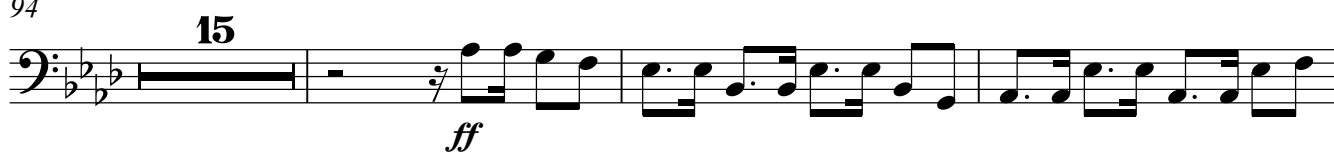
84



89



94



112



115

