

Tropico Medly

обработка С.Моисеева

1 Allegro ♩=144



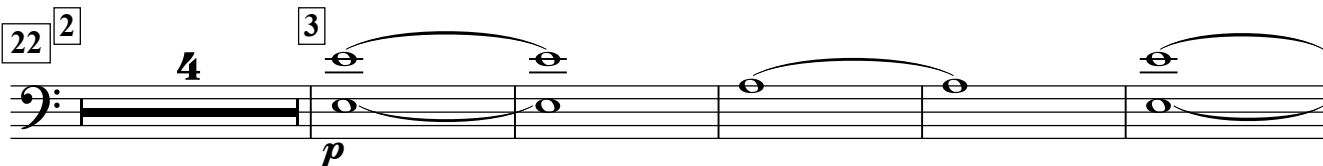
6



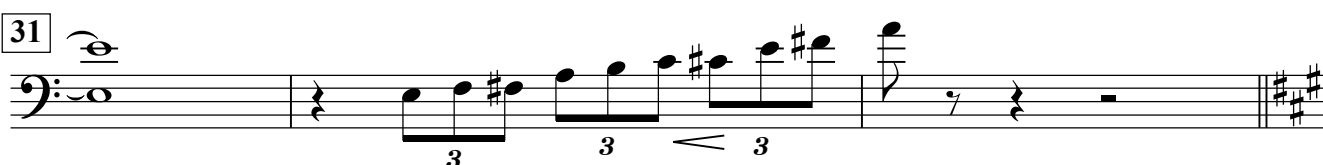
10 1



22 2



31



34 4



39



Баян 3

This page of musical notation for a bass line includes the following elements:

- Measures 45-50:** The key signature changes from one sharp (F#) to two sharps (F# and C#). The notation features chords and rests.
- Measure 50:** A dynamic marking of *f* (forte) is present.
- Measures 58-60:** A tempo marking of $\text{♩} = 186$ is shown. A dynamic marking of *p* (piano) is present.
- Measures 71-80:** A dynamic marking of *p* is present. A crescendo hairpin is used to indicate a gradual increase in volume.
- Measures 82-90:** A dynamic marking of *f* is present.
- Measures 105-114:** A dynamic marking of *f* is present.
- Measures 121-128:** A dynamic marking of *p* is present.
- Measures 129-132:** A tempo marking of $\text{♩} = 168$ is shown. A dynamic marking of *f* is present.
- Measures 132-140:** A dynamic marking of *f* is present.

Баян 3

